

Growth dynamics of Scots pine in Olkusz Ore-bearing Region – preliminary results



Tomasz Zielonka, Piotr Malcher

Institute of Botany PASci, Kraków

Field measurements in the study plots

Tree layer DBH ≥ 10 cm

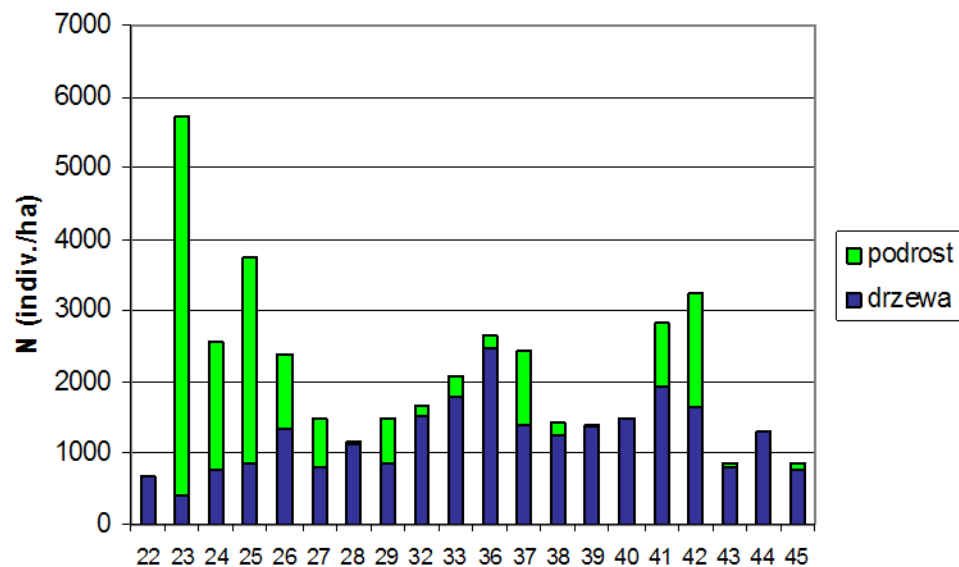
- measurement of DBH of all trees
- description of species
- measurement of height of 10 – 15 trees
- extraction of cores from 10 oldest trees (2 cores per each tree)

Regeneration: DBH < 10 cm i H > 1,3 m

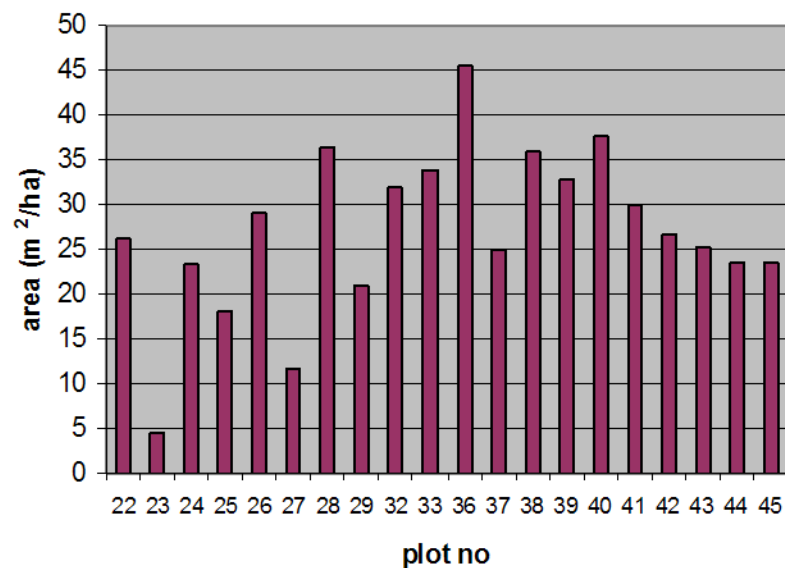
- measurement of DBH of all trees
- description of species



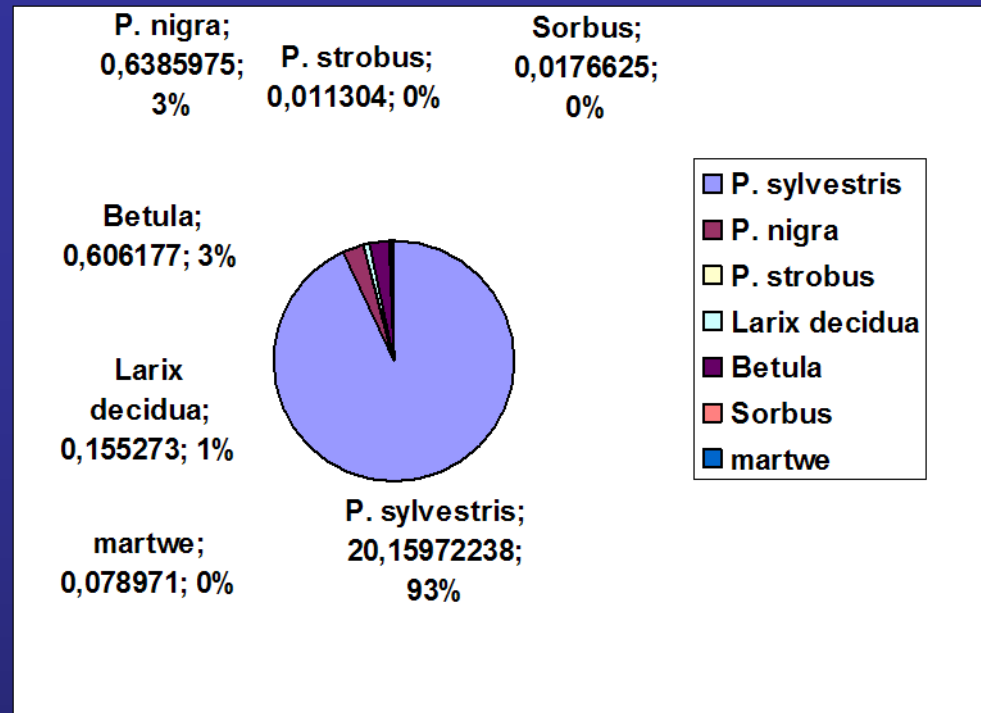
Density of trees and regeneration



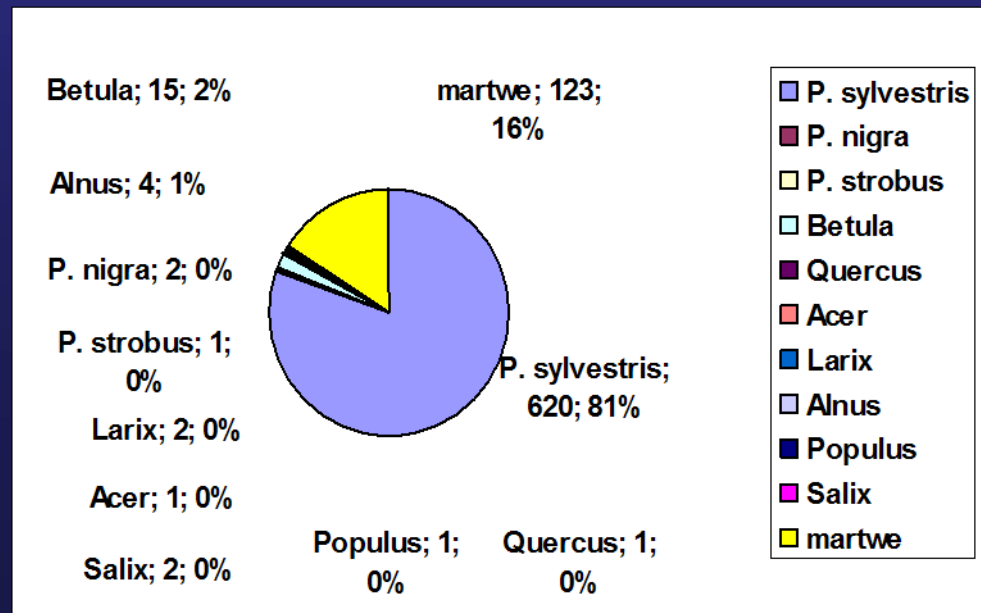
Basal area



Species composition based on basal area



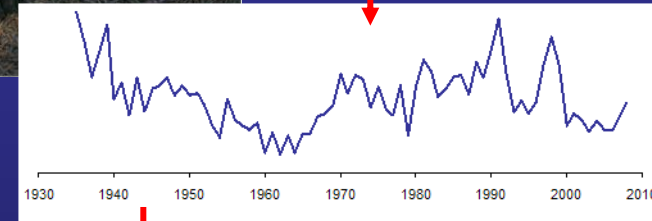
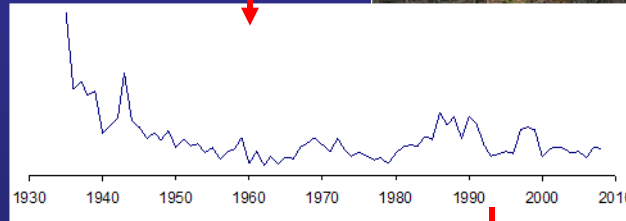
Species composition based on number of individuals



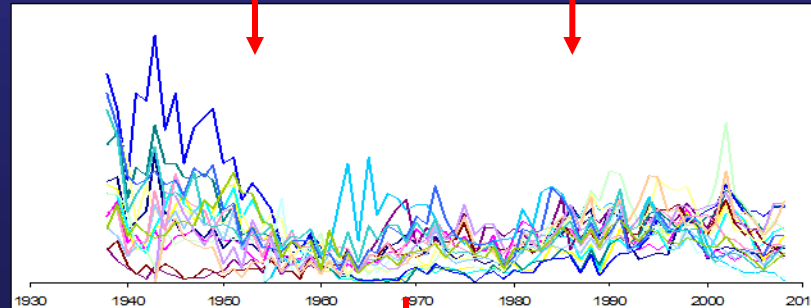
Extraction of cores with borer



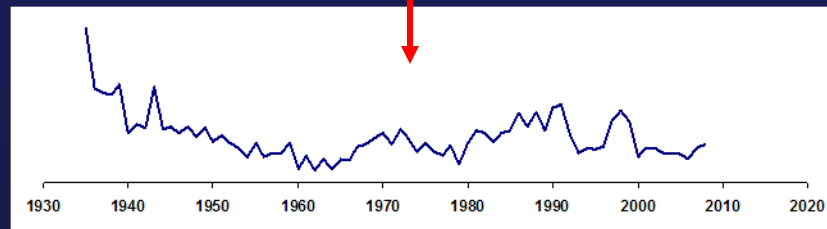
**Measurement of ring-width
(WinDendro)**



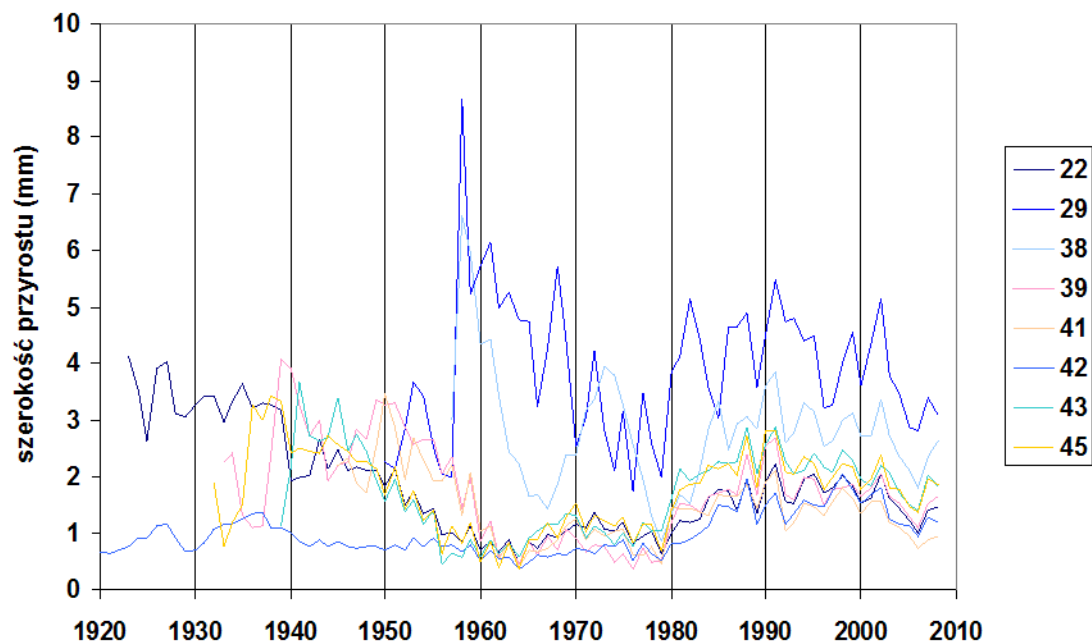
**Verification of ring-width series
(COFECHA)**



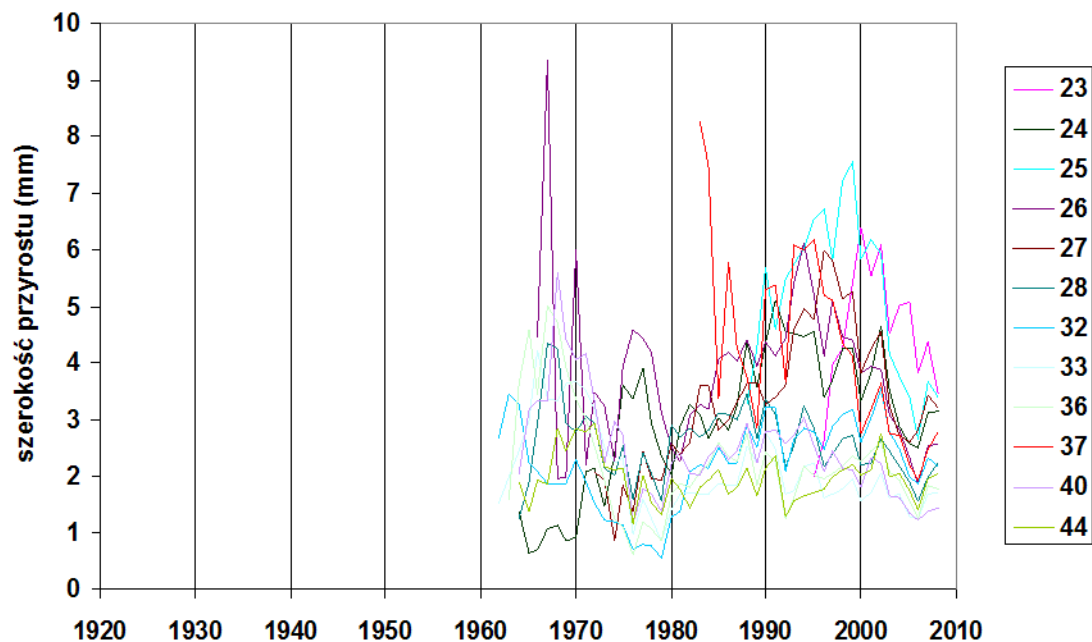
Average of both series for a tree



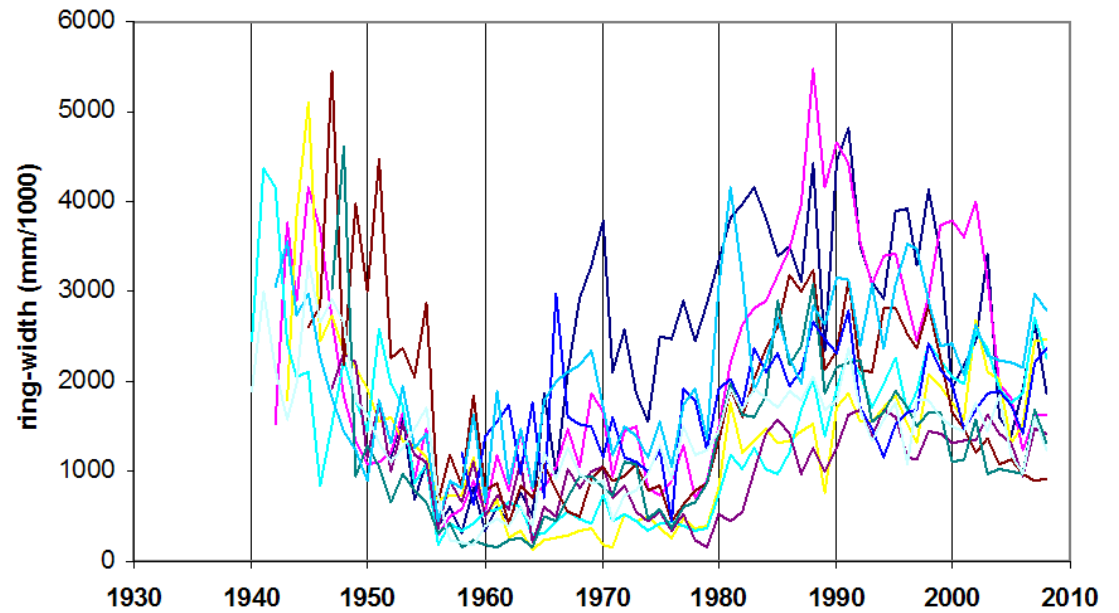
Average ring-width for trees,
which germinated before 1960



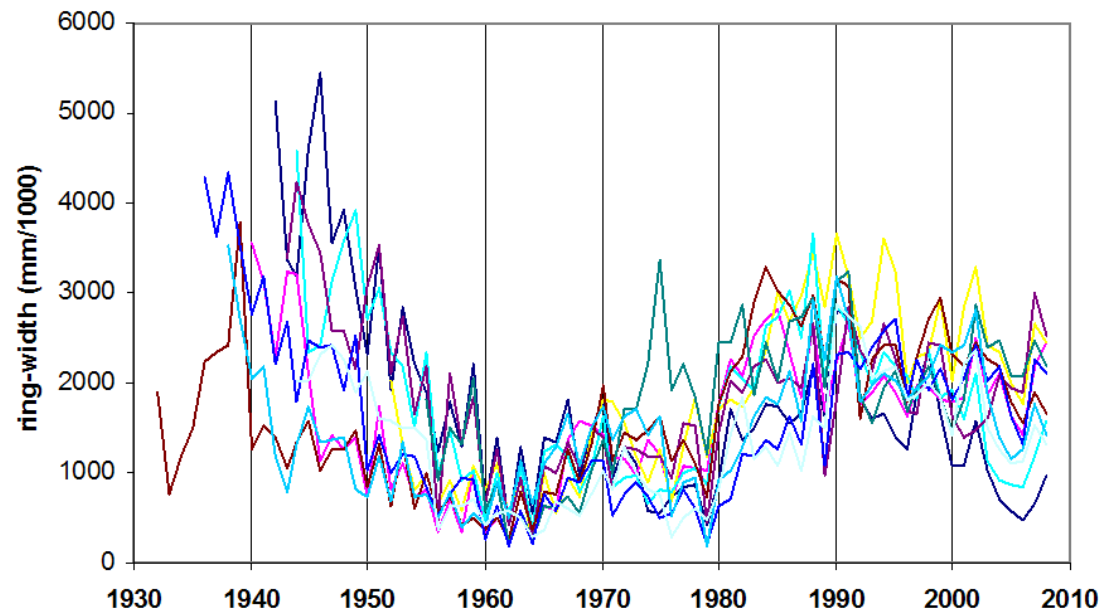
Average ring-width for trees,
which germinated after 1960



Ring-width series of trees
in plot no 43

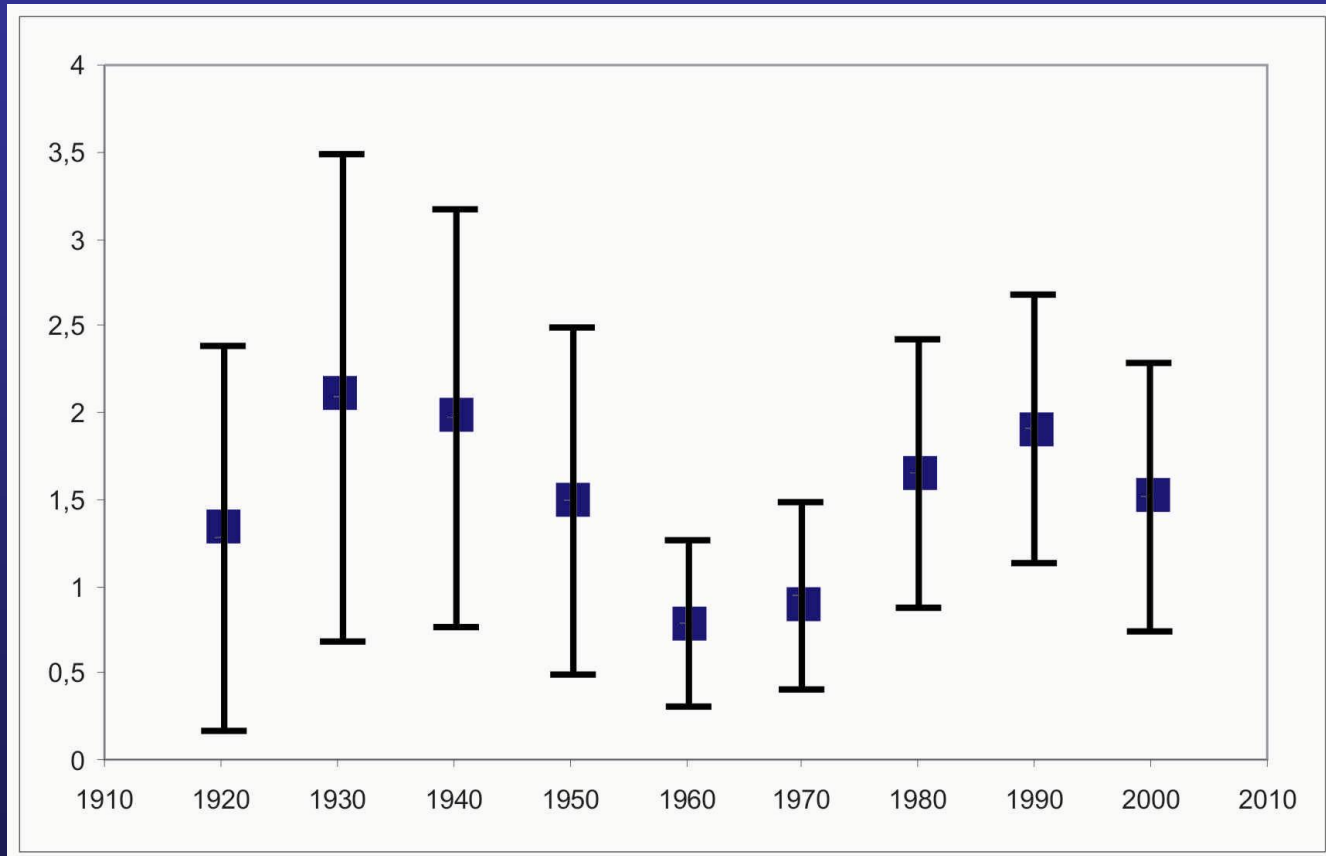


Ring-width series of trees
in plot no 45





Average decadal ring-width \pm SD
for all trees representing 6 the oldest plots









Fungal disease ?
(e.g. *Gremmeniella abietina*)

Insects outbreak ?
(e.g. *Rhyacionia buoliana*)

